
Las Cruces Extra-territorial Zoning Authority Las Cruces Extra-territorial Zoning Commission

CITY OFFICES

City Planning Department
575 S. Alameda Blvd.
P.O. Box 20000
Las Cruces, NM 88004
Phone: (575) 528-3043
Fax: (575) 528-3155

COUNTY OFFICES

County Planning Department
Doña Ana County Government Center
845 North Motel Blvd.
Las Cruces, NM 88007
Phone: (575) 647-7350
Fax: (575) 525-6131

TO: Extra-Territorial Zoning (ETZ) Authority

FROM: Jennifer Robertson, Planner *JR*

THROUGH: Cheryl Rodriguez, Development Services Administrator *CR*

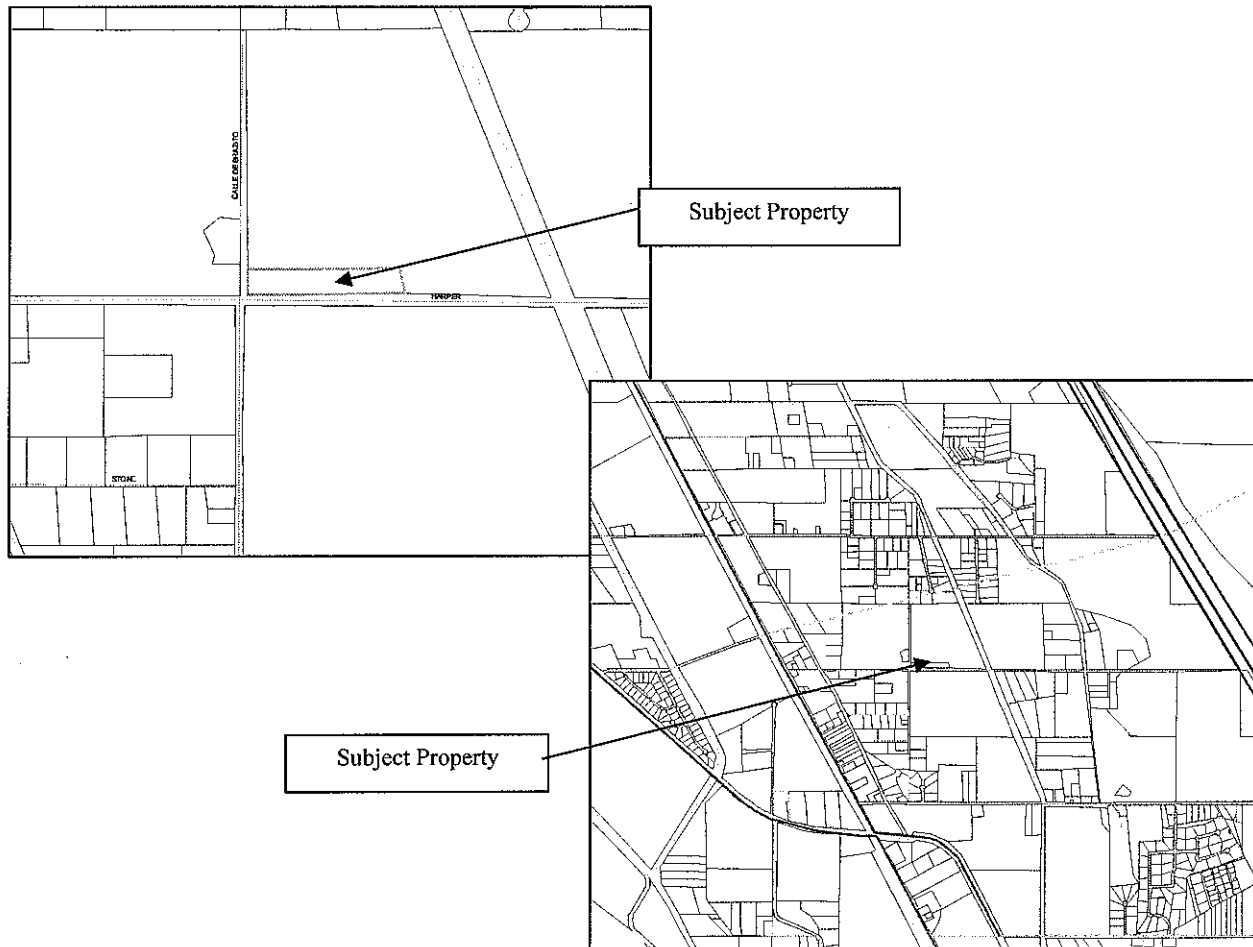
RE: Minor and Large Land Area Subdivision Applications – April 28, 2010 to June 1, 2010

DATE: June 1, 2010 M-10-123

The following minor subdivision application was received April 28, 2010 to June 1, 2010. There were no large land area subdivision applications received during this time. Any minor subdivision and large land area subdivision applications received after June 1, 2010 will be reflected on the status report for the next scheduled ETZ Authority meeting.

1. Case ETZS-10-011: Pritchett Subdivision, Minor Subdivision

Vicinity Map



- Submitted May 13, 2010.
- Subdivision application is still in review and the reviewing parties currently not approving are: CLC Engineering, CLC Utilities, CLC Land Management, CLC Surveying, CLC Planning, MPO, DAC Planning, DAC Engineering, DAC Fire and DAC Flood Commission.
- Proposes 2 lots on 2.12 ± acres.
- Zoned ER3M, minimum lot size 1 acre.
- Located at 615 E. Harper Road.
- Submitted by Blanchard Engineering for the Pritchett Revocable Trust, property owner.