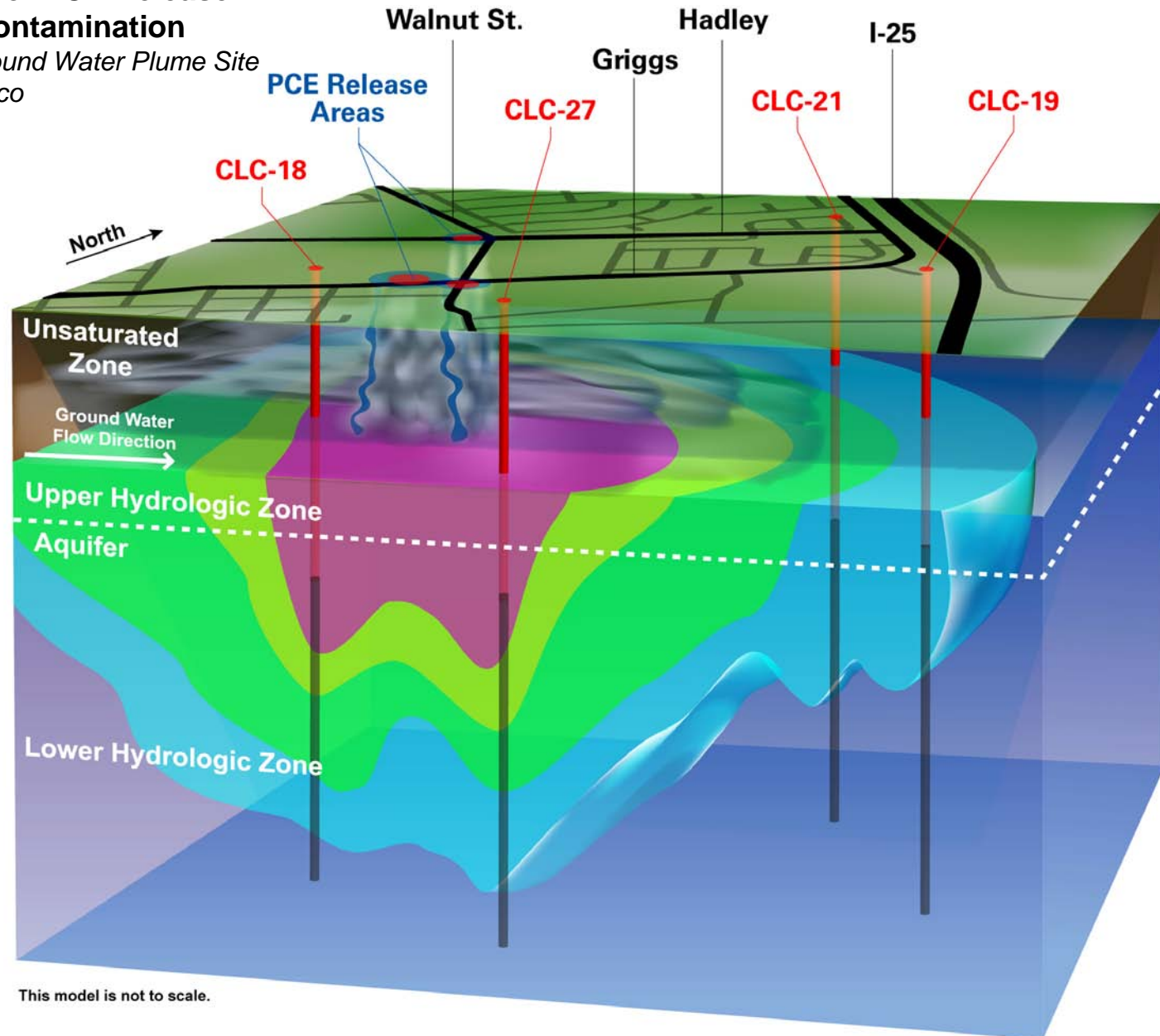


Figure 1-17

Conceptual Model of PCE Release and Subsurface Contamination

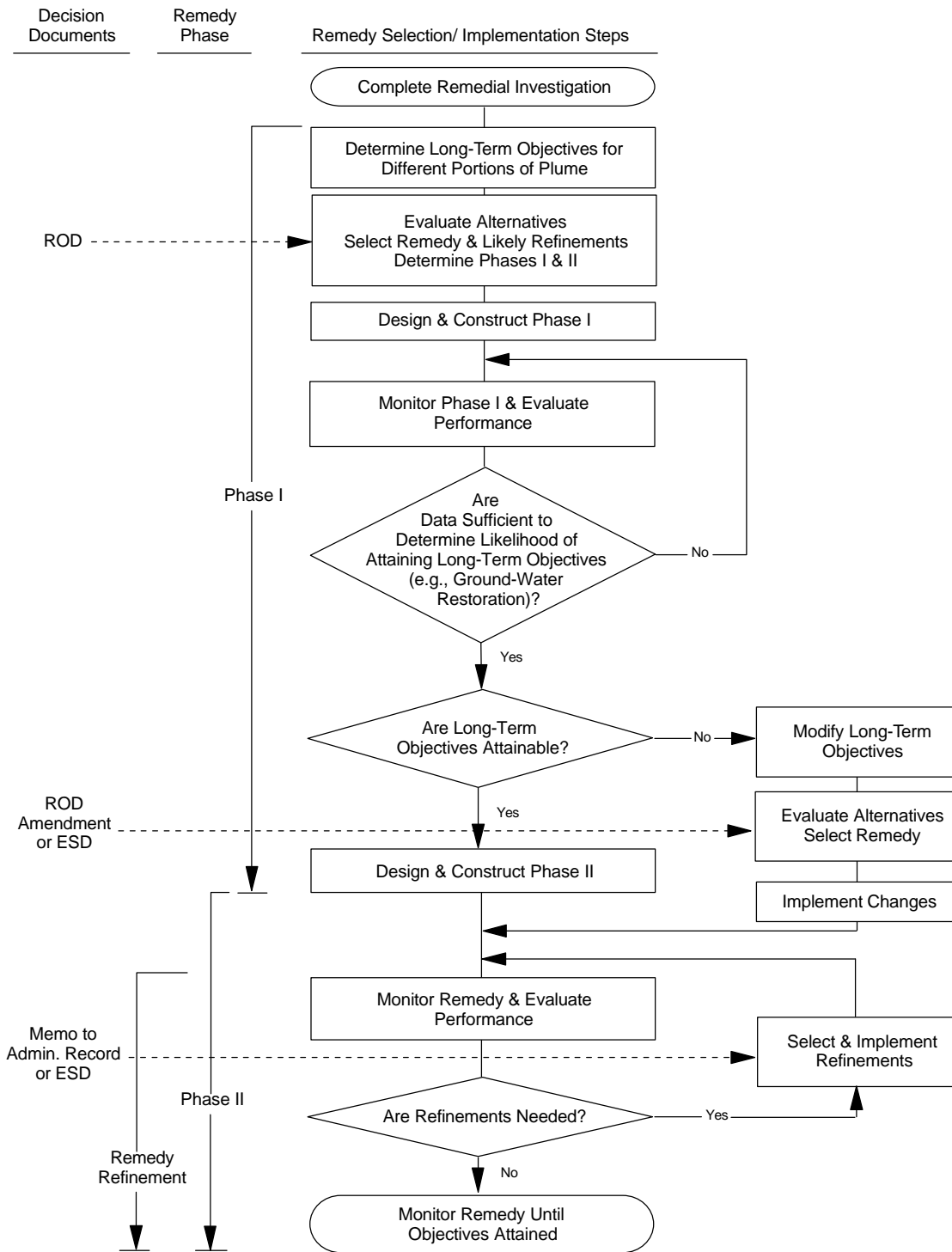
*Griggs and Walnut Ground Water Plume Site
Las Cruces, New Mexico*



This model is not to scale.

FIGURE 2-1: Phased Ground-Water Actions: Long-Term Remedy Implemented in Phases

This approach should be used when site characterization data are sufficient to determine that the likelihood of attaining long-term objectives is relatively high



Source: U. S. Environmental Protection Agency (EPA), 1996a. Presumptive Response Strategy and Ex-Situ Treatment Technologies for Contaminated Groundwater at CERCLA Sites. EPA 540/R-96/023. OSWER Directive 9283.1-12. October 1996.

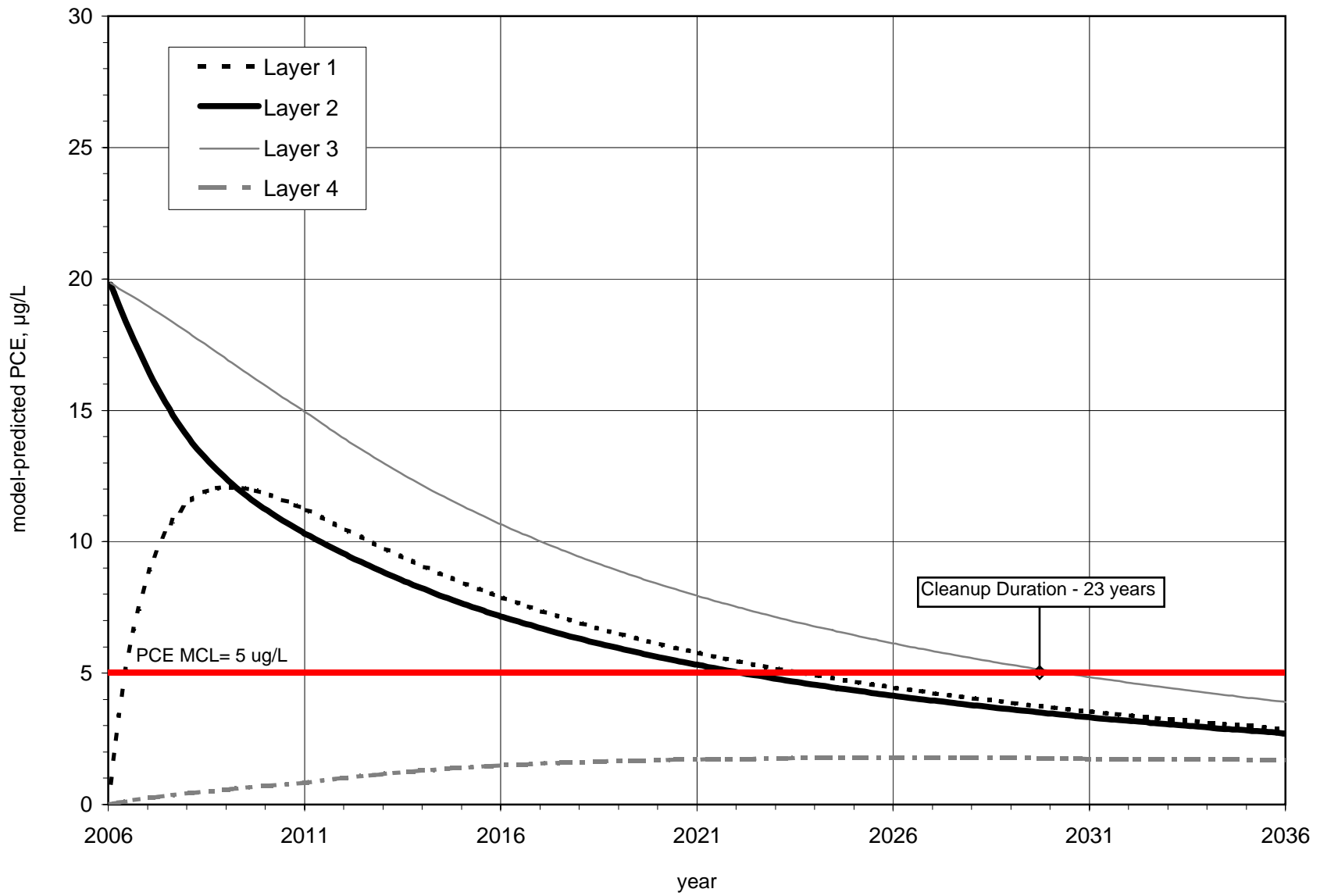


Figure 3-2. Time series of model-predicted PCE concentrations near the center of the plume (COP) in Model Layers 1, 2, 3, and 4 for Alternative 2.

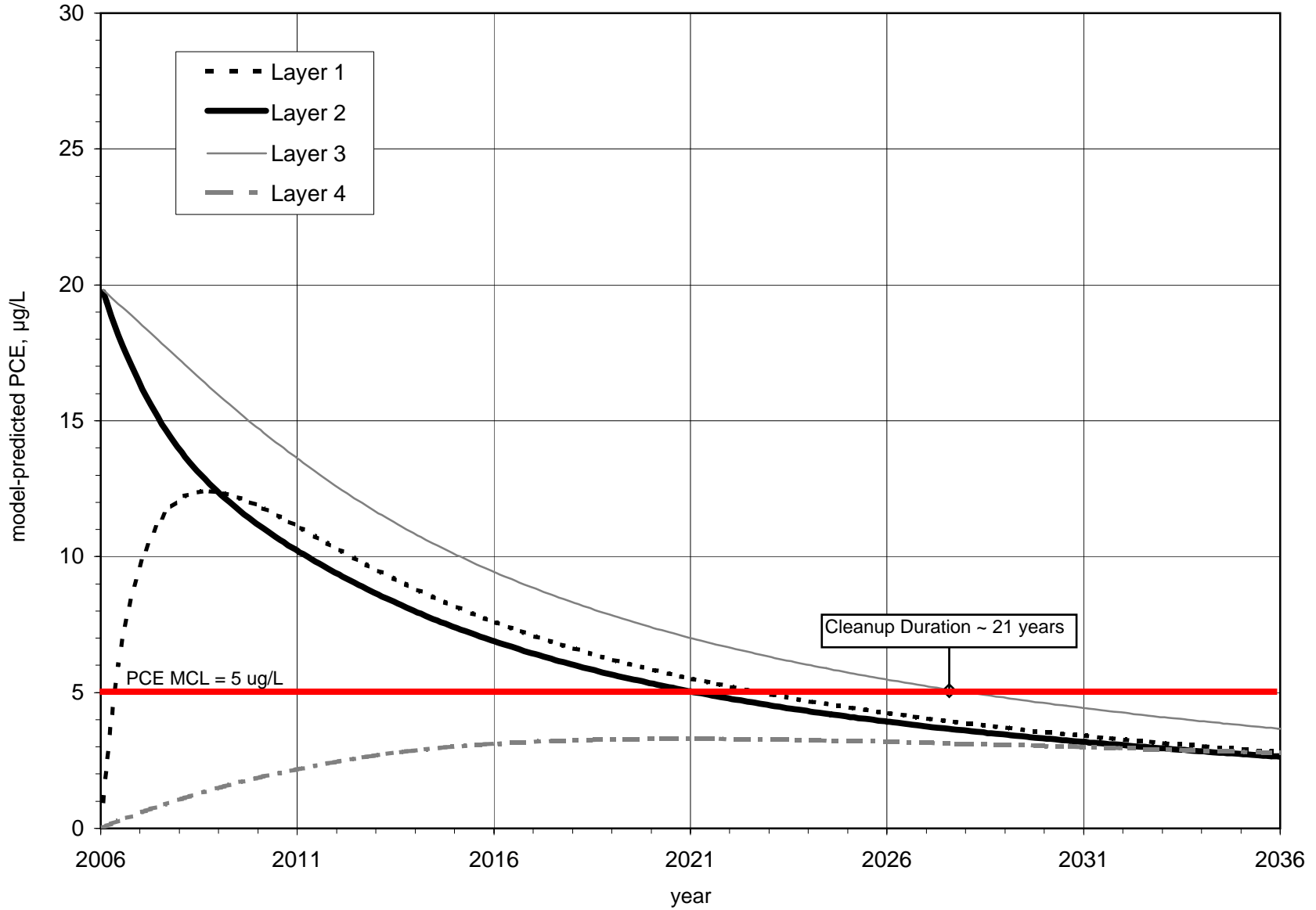


Figure 3-4. Time series of model-predicted PCE concentrations near the center of the plume (COP) in Model Layers 1, 2, 3, and 4 for Alternative 3.

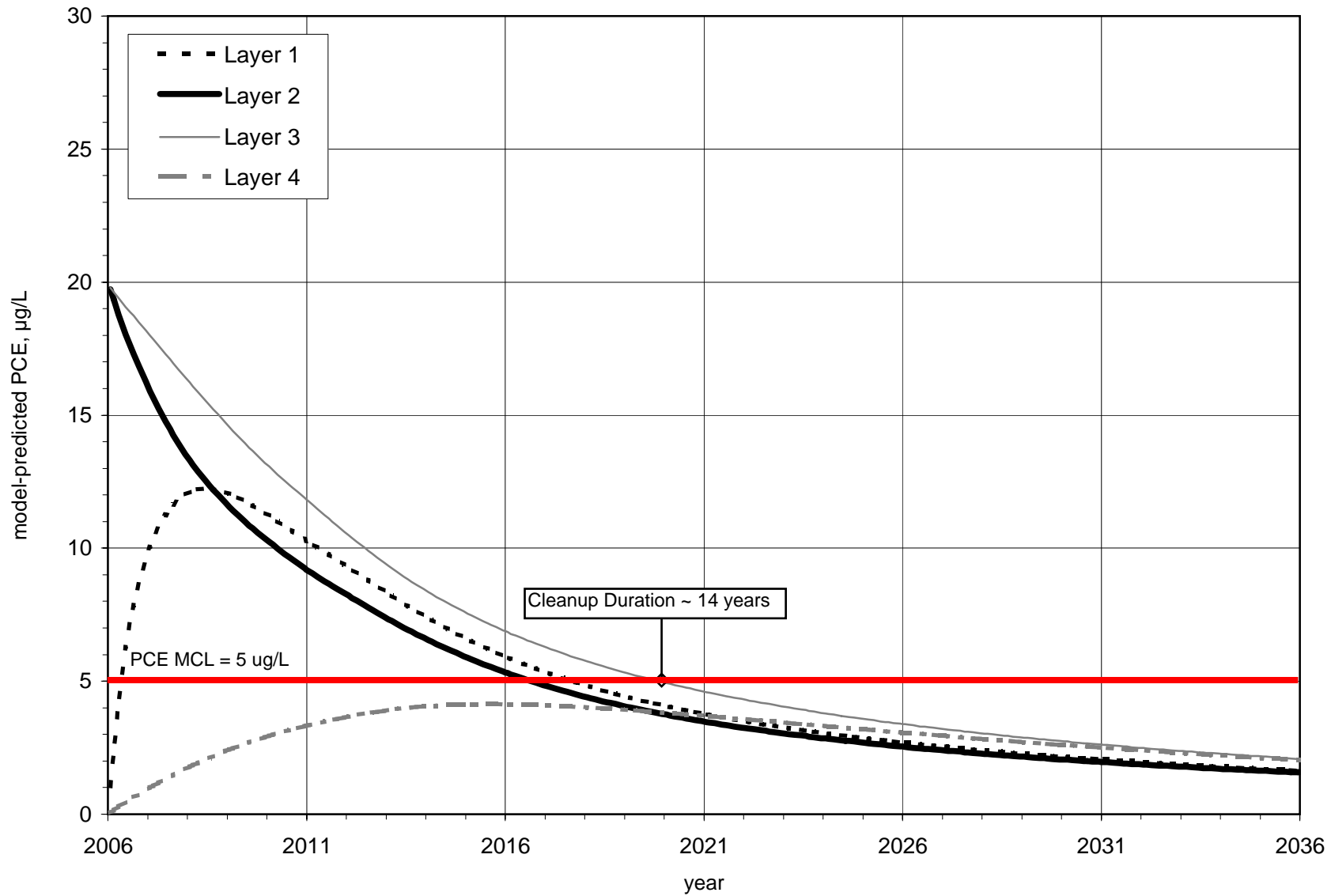


Figure 3-6. Time series of model-predicted PCE concentrations near the center of the plume (COP) in Model Layers 1, 2, 3, and 4 for Alternative 4.