

IN THE EVENT OF A WILDFIRE:

- Remain calm
- Create an evacuation plan
- Dress in protective clothing: reliable shoes, long sleeves and pants, gloves and protective face wear
- Time permitting gather all flammable household items into the middle of the room
- Switch off utilities
- Follow emergency instructions to evacuation center/safe zone

ADDITIONAL RESOURCES

For more information on wildfires please feel free to contact any of the agencies listed below:

Doña Ana County Office of Emergency Management

1170 North Solano, Suite D

Las Cruces, NM 88001

575-647-7900

www.DonaAnaCounty.org/emergency

Doña Ana County Fire Marshals Office

845 North Motel BLVD

Las Cruces, NM 88007

www.donaanacounty.org/fire

Incident Information System InciWeb

www.inciweb.com

National Interagency Fire Center

www.nifc.gov

Firewise Communities

www.firewise.org



WILDFIRES



PREVENTION AND PROTECTION

RECOMMENDATIONS FOR DOÑA ANA COUNTY

DEFENSIBLE SPACE

- Remove possible sources of fire fuel such as shrubs and log piles at least 15 feet from the home
- Mow, thin and maintain grasses to a short length
- Refrain from planting flammable vegetation close to home
- Keep yard free of trash and debris

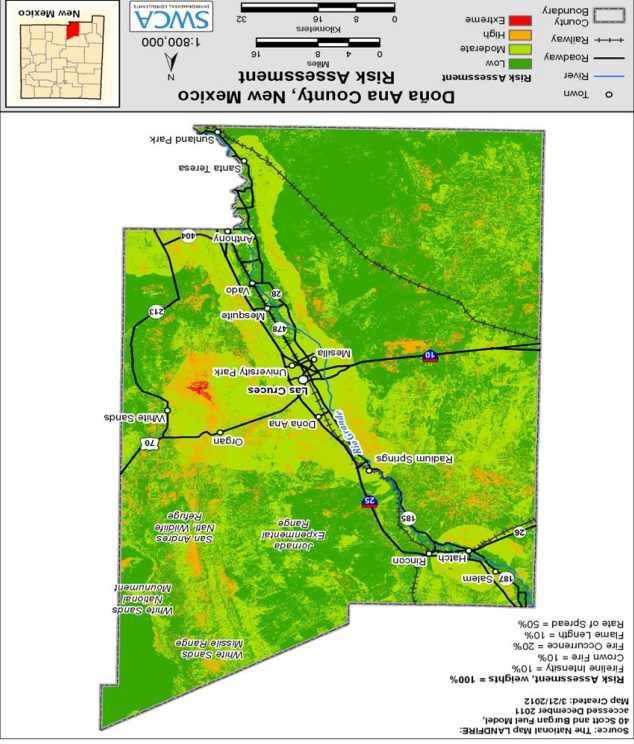
INFRASTRUCTURE

- Opt for flame resistant building materials for homes and decks such as brick and slate
- Refrain from building outhouses and storage sheds close to any residences
- Ensure easy access for emergency vehicles to buildings



Source: The National Map Landfire: 40 Spot and Burned Fuel Model, accessed December 2011
Map Created: 3/21/2012

Risk Assessment, weights = 100%
Fire Frequency = 10%
Crown Fire = 10%
Fire Occurrence = 20%
Flame Length = 10%
Rate of Spread = 50%



RISK TO DOÑA ANA COUNTY

There are four main wildfire risk factors within Doña Ana County:

- Fire Fuel—Biomass such as shrubs, twigs, saltcedar and trash
- Topography—County's topography allows fires to travel to homes uphill
- Weather—The dry, hot climate of the county is ideal for wildfire
- Infrastructure—Many homes lack defensible space from each other, fire fuel and/or are made of flammable material such as lumber



Wildfires also known as forest fires are rapidly spreading fires that tend to occur in extended dry, hot seasons aided by an abundance of fire fuel and some form of fire igniter.

There are three main causes of wildfire in Doña Ana County:

- Lightning
- Human Carelessness
- Slash and Burn Farming

While lightning is a natural weather occurrence, wildfires as a result of slash and burn farming and acts of human carelessness such as the improper use of fireworks, acts of arson and careless maintenance of campfires can all be avoided.

WILDFIRES